

Funke

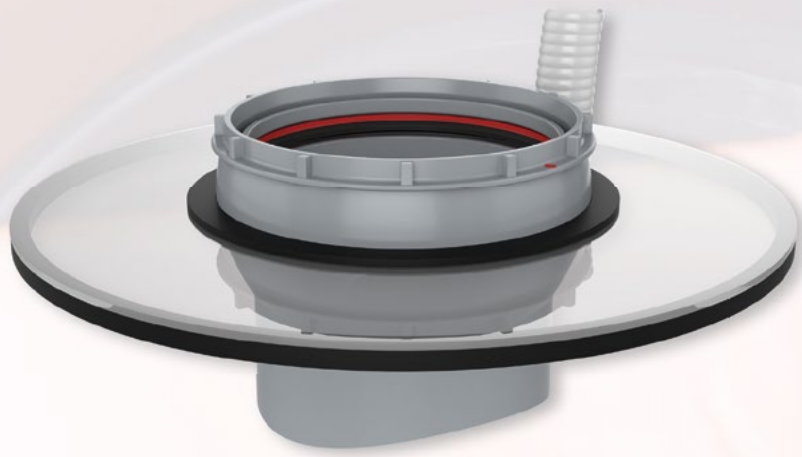
Renovation Socket

DN/OD 160 and DN/OD 200

*with DIBt Z-42.3-564
certification*



For the renovation of sewer connections



Funke Renovation Socket

easy installation and unique functions

Before

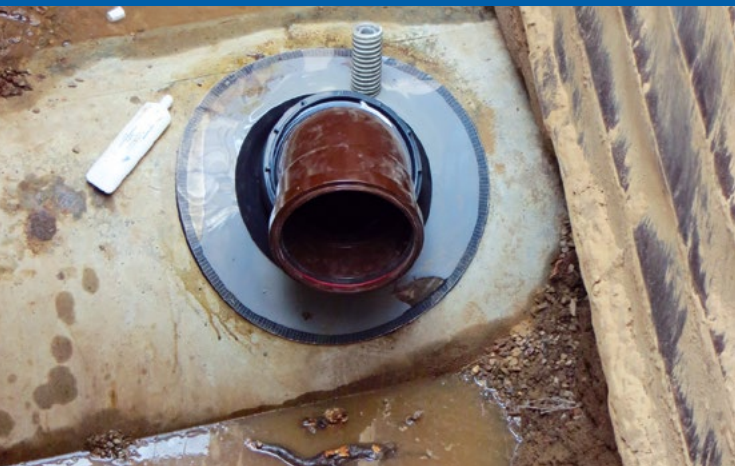


The background

During renovation or the subsequent integration of lateral drainage pipes to concrete and clay pipes, civil engineering companies often have to handle worn-out, non-conformance and broken holes.

Due to its construction it is possible to integrate lateral drainage pipes subsequently and safely. Additionally, the Renovation Socket is equipped with a socket which is adjustable from 0° to 11°.

After



Advantages of the **Funke Renovation Socket**

- Suitable for the subsequent renovation of old sewer connections
- Cost-efficient and unique compared to other open-trench methods.
- Installation also possible with broken-out openings
- Non-positive connection
- Tightly sealed by special grouting resin
- Two-component grouting resin is available
- Assembly tools are available
- Adjustable connection from 0° to 11°

The product

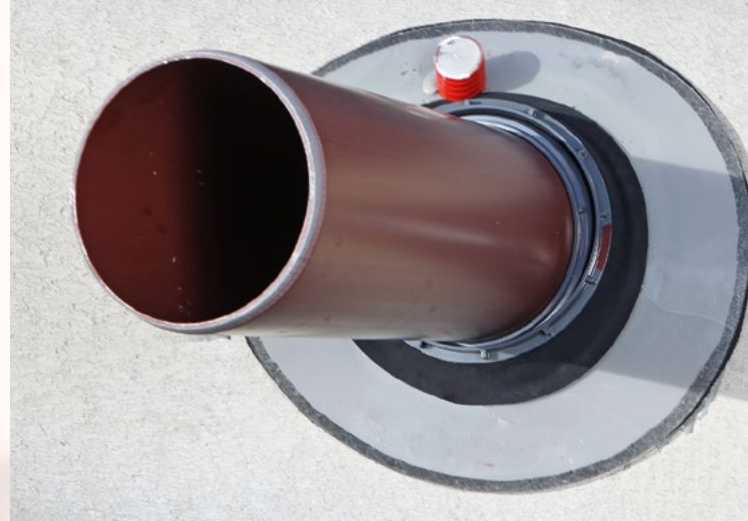
The Funke Renovation Socket is for the renovation of sewer connections in old, worn-out and broken holes. Two versions are available: The DN/OD 160 Renovation Socket is ideal for broken areas in pipes measuring max. 260 mm (min. 200 mm); with the DN/OD 200 version, broken areas must not be larger than max. 310 mm in diameter (min. 250 mm).

The Renovation Socket consists of an foldable inner casing, a transparent outer form-work with a filler neck and an adjustable socket. The tools needed for assembly are available from the manufacturer as well, and must be purchased separately. Due to the different sizes of the inner casing, the renovation sockets are each available in three versions for varying diameters respectively wall thicknesses (see table below). Moreover, the renovation socket and grouting resin is available in a set.

Connection	Version/Type	Main Pipe	Wall Thickness	Code
DN/OD 160	Type 1	DN 300	35–110 mm	603300160
DN/OD 160	Type 2	DN 400–600	50–130 mm	603400160
DN/OD 160	Type 3	DN 700–1000	85–160 mm	603700160

Connection	Version/Type	Main Pipe	Wall Thickness	Code
DN/OD 200	Type 1	DN 400	50–130 mm	603400200
DN/OD 200	Type 2	DN 500–600	55–140 mm	603500200
DN/OD 200	Type 3	DN 700–1000	85–180 mm	603700200

Accessories	Code
Adjustable installation tool for all types	603000200



Scope of delivery: Funke Renovation Socket



Two-component
Grouting Resin

Resin
Mixer

Foldable Inner Casing

Renovation socket with
a transparent outer form-
work and filler neck

Filling Funnel



Sealing
Compound

Cleaning Agent Brush

Accessories:
Adjustable
installation tool
for DN/OD 160
and DN/OD 200
(not included in
the scope of delivery)



